

# B.E.G. LUXOMAT® PD9-DIGI-FC

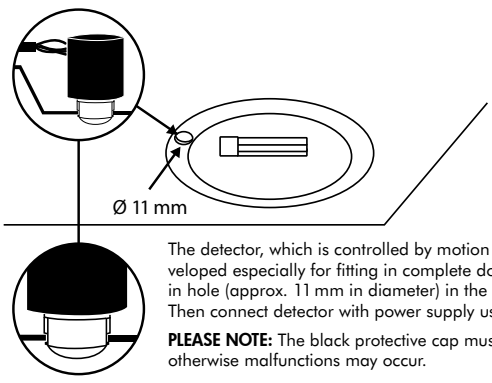
## Installation and Operating Instruction for B.E.G.-occupancy detectors PD9-DIGI-FC

### 1. Mounting preparations

Work on the 230 V mains supply may only be carried out by qualified professionals or by instructed persons under the direction and supervision of qualified skilled electrical personnel in accordance with electrotechnical regulations.

Disconnect supply before installing!

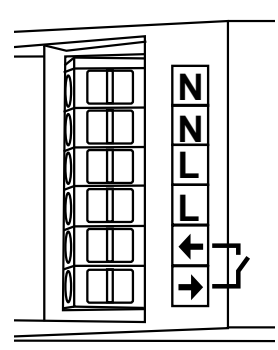
### 2a. Installation of the LUXOMAT® PD9-DIGI-FC



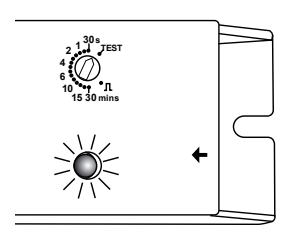
The detector, which is controlled by motion alone, was developed especially for fitting in complete downlights. Insert in hole (approx. 11 mm in diameter) in the light's outer ring. Then connect detector with power supply using RJ11 plug.

**PLEASE NOTE:** The black protective cap must not be removed otherwise malfunctions may occur.

### 2b. Connecting terminals

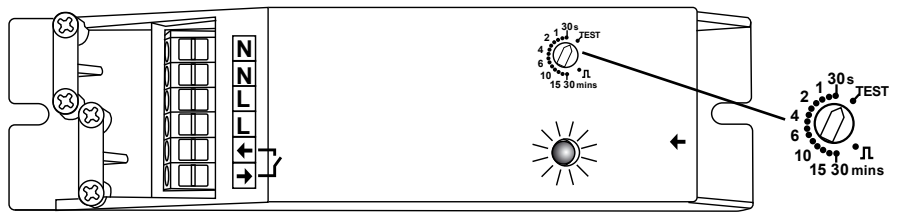


### 2c. Self test cycle



The LUXOMAT® PD9-DIGI-FC enters an initial 60-second self-test cycle, when the supply is first connected (LED is flashing).

### 3. Putting into operation / Settings



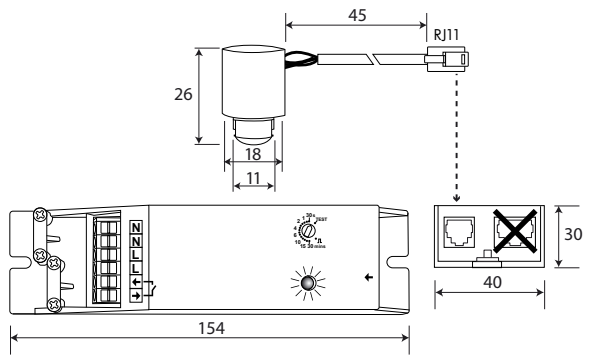
#### Follow-up time for light control

The time can be set infinitely variably at between 30 seconds and 30 minutes.

Symbol  $\perp$ : Impulse < 1 sec. | Symbol TEST: Test mode

Every movement switches on the light for a period of 1 second, switching it off for a period of 2 seconds after that regardless of the level of brightness.

### 4. Dimensions



### 5. Article / Part nr.

Description	Part nr.
PD9-DIGI-FC	92917

### 6. Technical data PD9-DIGI-FC

Connection of sensor and power supply by means of telephone plug RJ11

**Power supply:** 230 V~ +6 %/-10 %

**Power consumption:** < 1 W

**Ambient temperature:** -25°C – +50°C

**Degree of protection/class:** IP20 / III / CE

**Settings:** manually with potentiometer

**Area of coverage:** circular 360°

**Range:** max. Ø 5 m

**Mounting height:** 2 - 3 m

**Type of contact:** normally open/NO - with preceding tungsten contact

**Contact load:** 2300 W, cos(φ)=1 / 1150 W, cos(φ)=0,5 pulse / 30 sec. - 30 min. / test

**Time-settings:**

**Dimensions H x Ø [mm]**

Detector Ø 18 x H 26 mm

Visible part Ø 11 x H 3 mm

Power supply L154 x W 40 x H 30 mm

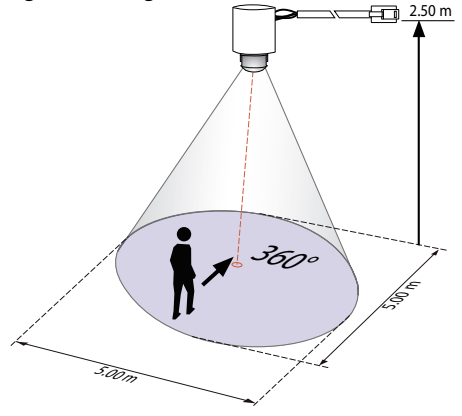
The supply voltage for the sensor is electrically isolated.

**CE Declaration of Conformity:** The product complies with the low voltage recommendation 2006/95/EC and the EMV recommendation 2004/108/EC.

### 7. Trouble shooting

- Lamp does not light up**  
Lamp may be defective:  
Replace lamps  
No mains connection/power:  
Check connection and mains fuse by qualified electrician  
Lens of sensor unit obstructed by dirt or other objects:  
Clean lens, remove objects
- Lamp turns ON too late or detection range too small**  
LUXOMAT® PD9-DIGI-FC is mounted too high:  
See mounting heights. Correct mounting if required.
- Lamp stays ON continuously**  
Continuous thermal activity detected ie fan, central heating ducts, animals within detection area:  
Remove heatsource. Check proper function of LUXOMAT® PD9-DIGI-FC by covering the lens.  
After expiry of delay timer, has to turn OFF lighting.
- LUXOMAT® PD9-DIGI-FC connected in parallel to a manual override switch:**  
Connect switch correctly
- Unintended switching of light**  
Movement of heat source within detection area:  
Check on presence of animals, fans or heaters

### 8. Range of Coverage



### 9. Wiring diagram

