

LUXOMAT® PD2-M-2C-SM/-FC/-FM



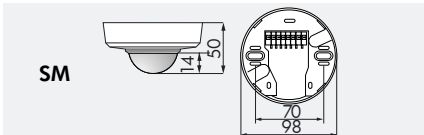
SM



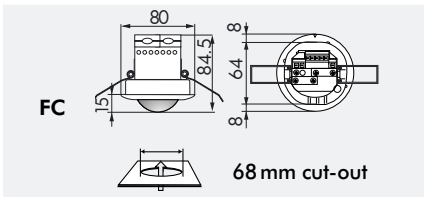
FC



FM

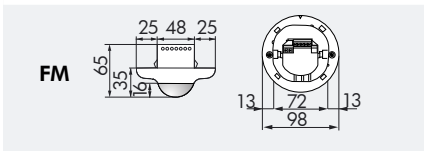


SM



FC

68 mm cut-out



FM

TECHNICAL DATA

- 230V~ ±10%
- 360°
- seated Ø 4.00 m
- across Ø 10.00 m
- towards Ø 6.00 m
- SM/FC/FM = IP20 / Class II / C€
- IP
- SM** Ø 98 x H 50 mm
- FC** Ø 80 x H 84.5 mm
- FM** Ø 98 x H 65 mm
- 25°C to +50°C
- Housing UV- and shock-resistant Polycarbonate
- IR-PD, IR-PD-Mini

Channel 1 (Control the lighting)

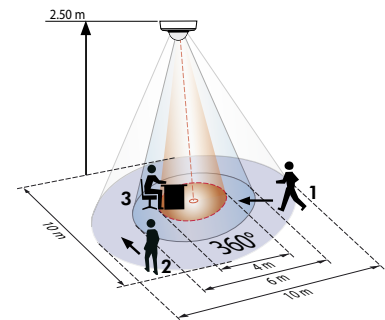
- 2300 W, cos φ = 1; 1150 VA, cos φ = 0.5
- 15 sec. - 30 min. or impulse
- 10 - 2000 Lux

Channel 2 (Control devices)

- dry contact type NO, 3A, 230 V, cos φ = 1
- Alarm pulse, pulse or 5 - 120 min.

PRODUCT INFORMATION

- Remote controllable occupancy detector for inside use LUXOMAT® PD2-M-2C as Master version for surface, false ceiling and flush mounting with circular detection area
- Two switching channels, one to switch the lighting, the second to switch other loads e.g. HVAC by potential free relay of the detector
- The connection of a unlimited number of slaves for reasonable extension is possible!
- Many programmes adjustable with the remote control LUXOMAT® IR-PD
- Ceiling mounting
- **Typical applications:** offices, conference rooms, schools, nursery schools, hospitals etc.



- 1 ■ Walking towards
- 2 ■ Walking across
- 3 ■ Seated activity

ACCESSORY (OPTIONAL)

IR-PD



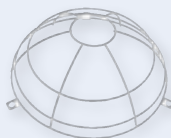
(to order separately)

IR-PD-Mini



(to order separately)

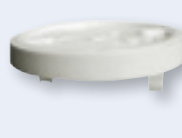
Wire basket



Covering IP23



Socket IP54



Blinds



Slaves



PD2-S

Description	Colour	Part number
PD2-M-2C-SM	white	92150
PD2-M-2C-FC	white	92165
PD2-M-2C-FM	white	92155
Accessory (optional)		
LUXOMAT® IR-PD	grey	92160
LUXOMAT® IR-PD-Mini	grey	92159
Covering IP23	transparent	92206
Wire basket BSK	white	92199
Socket IP54	white	92161