



**Automations- und
Steuerungstechnik GmbH**

enocean EIB gateway



RF-receiver and gateway to EIB

Order number: E001-H023000



IMPORTANT-READ CAREFULLY:

This b+b End-User License Agreement ("EULA") is a legal agreement between you (either an individual or a single entity) and b+b Automations- und Steuerungstechnik GmbH, for the software product identified above, which includes computer software and may include associated media, printed materials, and "online" or electronic documentation ("SOFTWARE PRODUCT"). By installing, copying, or otherwise using the SOFTWARE PRODUCT, you agree to be bound by the terms of this EULA.

SOFTWARE PRODUCT LICENSE

1. COPYRIGHT TREATIES

The SOFTWARE PRODUCT is protected by copyright laws and international copyright treaties, as well as other intellectual property laws and treaties. The SOFTWARE PRODUCT is licensed, not sold.

2. GRANT OF LICENSE.

This EULA grants you the following rights:

- a. Software Product. b+b grants to you as an individual, a personal, nonexclusive license to make and use copies of the SOFTWARE for the sole purposes of using the SOFTWARE's functionality.
- b. Storage/Network Use. You may also store or install a copy of the SOFTWARE PRODUCT on a storage device, such as a network server, used only to install or run the SOFTWARE PRODUCT on your other computers over an internal network; however, you must acquire and dedicate a license for each separate computer on which the SOFTWARE PRODUCT is installed or run from the storage device. A license for the SOFTWARE PRODUCT may not be shared or used concurrently on different computers.
- c. Electronic Documents. Solely with respect to electronic documents included with the SOFTWARE PRODUCT, you may make an unlimited number of copies (either in hardcopy or electronic form), provided that such copies shall be used only for internal purposes and are not republished or distributed to any third party.

3. DESCRIPTION OF OTHER RIGHTS AND LIMITATIONS.

- a. Limitations on Reverse Engineering, Decompilation, and Disassembly. You may not reverse engineer, decompile, or disassemble the SOFTWARE PRODUCT.
- b. Separation of Components. The SOFTWARE PRODUCT is licensed as a single product. Its component parts may not be separated for use on more than one computer.
- c. Changing documentations. You may not make changes to the documentation of the SOFTWARE PRODUCT.
- d. Termination. Without prejudice to any other rights, b+b may terminate this EULA if you fail to comply with the terms and conditions of this EULA. In such event, you must destroy all copies of the SOFTWARE PRODUCT and all of its component parts.



4. COPYRIGHT.

All title and copyrights in and to the SOFTWARE PRODUCT (including but not limited to any images, photographs, animations, video, audio, music, text, and "applets" incorporated into the SOFTWARE PRODUCT), the accompanying printed materials, and any copies of the SOFTWARE PRODUCT are owned by b+b or its suppliers. The SOFTWARE PRODUCT is protected by copyright laws and international treaty provisions. Therefore, you must treat the SOFTWARE PRODUCT like any other copyrighted material except that you may install the SOFTWARE PRODUCT on a single computer provided you keep the original solely for backup or archival purposes. You may not copy the printed materials accompanying the SOFTWARE PRODUCT.

5. LIMITED WARRANTY

Except with respect to the REDISTRIBUTABLES, which are provided "as is," without warranty of any kind, b+b warrants that (a) the SOFTWARE PRODUCT will perform substantially in accordance with the accompanying written materials for a period of ninety (90) days from the date of receipt, and (b) any hardware accompanying the SOFTWARE PRODUCT will be free from defects in materials and workmanship under normal use and service for a period of one (1) year from the date of receipt.

6. CUSTOMER REMEDIES.

b+b's entire liability and your exclusive remedy shall be, either (a) return of the price paid, or (b) repair or replacement of the SOFTWARE PRODUCT or hardware that does not meet b+b Limited Warranty. This Limited Warranty is void if failure of the SOFTWARE PRODUCT or hardware has resulted from accident, abuse, or misapplication.

NO OTHER WARRANTIES: TO THE MAXIMUM EXTENT PERMITTED BY APPLICABLE LAW, b+b DISCLAIMS ALL OTHER WARRANTIES

NO LIABILITY FOR CONSEQUENTIAL DAMAGES: TO THE MAXIMUM EXTENT PERMITTED BY APPLICABLE LAW, IN NO EVENT SHALL b+b OR ITS SUPPLIERS BE LIABLE FOR ANY SPECIAL, INCIDENTAL, INDIRECT, OR CONSEQUENTIAL DAMAGES WHATSOEVER (INCLUDING, WITHOUT LIMITATION, DAMAGES FOR LOSS OF BUSINESS PROFITS, BUSINESS INTERRUPTION, LOSS OF BUSINESS INFORMATION, OR ANY OTHER PECUNIARY LOSS) ARISING OUT OF THE USE OF OR INABILITY TO USE THE SOFTWARE OR HARDWARE PRODUCT, EVEN IF b+b HAS BEEN ADVISED OF THE POSSIBILITY OF SUCH DAMAGES.

Life support:

These products are not designed for use in life support appliances, devices or systems where malfunction of these products can reasonably be expected to result in personal injury. B+b customers using or selling these products for use in such applications do so at their own risk and agree to fully indemnify b+b for any damages resulting from such application.

Copyright 1998 - 2009 b+b Automations- und Steuerungstechnik GmbH. All rights reserved.



Microsoft and Windows are trademarks of Microsoft Corporation.

This handbook describes also functions, which are options.
Only qualified persons are allowed to install our units.

Softwaredesign und Coding:	Volker Knapp, Hartmut Zander, Peter Bernert, Michael Weis
Documentation:	Volker Knapp, Michael Weis
Editor:	Steffen Kiene

b+b Automations- und Steuerungstechnik GmbH

**Eichenstraße 38a
D-64743 Beerfelden
Tel.: +49 6068 / 478910**

**Email: support@bb-steuerungstechnik.de
Internet: <http://www.bb-steuerungstechnik.de>**



Table of contents

Highlights enoclean-EIB-Gateway	6
Fields of application	6
Contents of delivery	6
Introduction	7
Technical datas enoclean-EIB-gateway	7
enoclean-EIB-gateway view	8
enoclean-EIB-gateway connectors	9
Software to configure the enoclean-EIB-Gateway	10



Highlights enocean-EIB-Gateway

- Connects battery-less RFsensors to the EIB, no additional wiring needed
- Expands the EIB with wireless sensors
- Graceful designed housing
- Supports all enocean-Sensoren (Buttons, Windowcontacts, Temperature...)
- supports switching, dimming, temperature adjust, shutters, central functions...
- Easy integration into existing EIB systems
- contains RF-receiver and integrated EIB-bus-coupler
- no ETS required to parametrize the device

Fields of application

- Expansion of the EIB without additional wiring
- Use of the EIB in buildings with moveable walls.
- Use of the EIB in historical buildings where no additional wiring is allowed.
- EIB-functions independent of fix mounted pushbuttons
- Individual controlling of rooms with removeable walls
- Pushbuttons mountable even on Glass surfaces

Contents of delivery

- enocean-EIB-gateway with integrated EIB-Buscoupler
- software for parametrization
- Documentation



Introduction

As sensors may be used buttons (e.g. from PEHA or Omnio), temperaturesensors (e.g. from Thermokon), glass break detectors and many more. Those sensors dont need a battery, the needed energy is generated by pressing the button or by solarcells. The enocean-EIB-gateway allows switching, dimming, shutters, temperature and brightness-measurement.

Technical datas enocean-EIB-gateway

Main voltage:	no external energy required
Fitting:	round, 110mm
Number of supported enocean-devices:	50
Number of group addresses:	max 256, depends on datatypes
Supported EIS-Types:	Switching, dimming, shutter control, temperature, text, setpoint values ...
Cascading of enocean-EIB-Sensors:	max 32767 (EIB-Limit)



enocan-EIB-gateway view



enocean-EIB-gateway connectors



E1	EIB-programming LED
K1	EIB-program key for physical address
X1	EIB-connector
E2	EIB telegram LED
E3	enocean reveice LED (RF receiver)
E4	Supply LED (power supply)



Software to configure the enocean-EIB-Gateway

The device needs to know what sensors and switch modules it has to handle. This parameters have to get defined and downloaded using the included software. Each enocean-device has a build-in unique ID number, so this ID is important to identify each device.

1) Getting the enocean device ID

Before you can start to parametrize the gateway, you will need to know all the IDs of all enocean-devices you want to use. Some vendors are putting a label on each device, showing the device type and the device ID. If there is no label or documentation available, it is possible to detect the device ID by using the enocean-EIB-gateway and the EIBDoktor or ETS software.

The gateway needs to be in “transparent mode” to give informations about enocean-devices. You can start the transparent mode by pushing the EIB-programming button of the gateway twice in a row. Now the EIB programming LED of the gateway (red LED beneath the EIB connector) should be slowly flashing.

If you have the full EIBDoctor software version 1.0.30, you can now see all device infos in the “New device” window of the enocean-EIB-gateway configuration (see next chapter), whenever your enocean device is sending its data. If you only have the ETS or a different EIB tool, you can extract the device information by the gateway’s EIB telegram yourself:

Send data from you enocean device, by simply pushing a switch (switch module) or pushing the learning button (sensors). The gateway will receive this data, and write informations to the EIB, at group address 15/7/255 – a 14 byte telegram with the following content:

Byte 1 = device type, (Enocean ORG)
 05 = Switch module („Button PTM 100“)
 06 = 1 byte sensor
 07 = 4 byte sensor
 08 = Remote Control

Byte 2 = DeviceID 3, highest byte
Byte 3 = DeviceID 2
Byte 4 = DeviceID 1
Byte 5 = DeviceID 0, lowest byte



Byte 6 = 00 – with all sensors,
 with switch moduls/remote control devices:
 00 – no button pushed
 A0 – button A0 pushed (left top)
 A1 – button A1 pushed (left bottom)
 B0 – button B0 pushed
 B1 – button B1 pushed
 C0 – button C0 pushed
 C1 – button C1 pushed
 D0 – button D0 pushed (right top)
 D1 – button D1 pushed (right bottom)

If the switch module does not have 8 switch buttons, just a few selected channels from A0..D1 will be available.

Bytes 7..10 =hexadecimal data bytes send by the enocean device

Bytes 11..14 = BCD coded serial number of the enocean gateway

This EIB telegram can be displayed from either the EIBDoktor software or the ETS software.

If you configure the EIBDoktor software to display this group addresses with „No EIS type“ and „hexadecimal“, you will see the telegram in the row „data“ as described above:

For example:

05 00 04 92 1D B0 70 00 00 00 03 60 80 11

Switch module, ID 0004921D, button B0 pushed, gateway SN 03608011

06 00 00 00 56 00 08 00 00 00 03 60 80 11

1 Byte Sensor, ID 00000056, gateway SN 03608011

07 00 00 0C 12 00 E1 7D 5C 0F 03 60 80 11

4 Byte Sensor, ID 00000C12, gateway SN 03608011

In the ETS3 software you can use the „telegram monitor“ function to get the same information, it will be displayed in the „data“ field.



If you only have an ETS2 software, you have to log the telegrams in the bus monitor mode, and display it afterwards.

After you have found out all of your device IDs, please reset the enocean gateway back into its standard mode, again by pushing the programming button twice.

2) Device definition

The EIBDoktor software (version 1.0.28 or newer) has a special configuration window for the enocean gateway. Even if you don't have an EIBDoktor hardware (and therefore no access to the EIB), you can use the software to define all gateway parameters. You can download the EIBDoktor software from our page www.bb-steuerungstechnik.de, section „downloads”.

The configuration window can be reached by selecting the menuitems „Options“ -> „ENOCEAN Gateway...”

Now the configuration window will appear. In the upper part of the window you have to enter the serialnumber of the gateway (you can see it on the gateway after removing the gateway case bottom by turning it leftside - or of course simply learn it from the information telegram), as well as the physical address you want to use with the gateway and a group address which will get used while configuring the gateway.

enocean-EIB-Gateway					
GW serialno.:	03608011	Phys. address:	1.1.200	Param. GA:	15/5/5

The parametrizing group address is by default 15/5/5, usually you do not need to change it.

The listbox in the main area of the window will display all defined devices and related device channels of one enocean gateway. By using the “New device” button you can define up to 50 enocean-devices, and (depending on the device type) up to 8 channels with different functions, values and groupaddresses (button “New channel...”).



New device...:

You have to enter here the device ID and to select a device type. You can also optionally enter a comment which will be displayed in the device list.

The following device types are available:

- Button PTM 100
- STM1 Sensor 1 Byte
- STM4 Sensor 4 Byte
- Remote Control

If you do not know the device ID or the device type, and you have the EIB Doctor software 1.0.30 (or newer), you can use the device information list at the bottom of the window: it will list all informations received in transparent mode of the enocean-EIB gateway, and you can simply double click an entry to use this information (ID and type). For more details about the transparent mode, see the previous chapter.

Delete device...:

You can delete a selected device (and all of its channels) by pushing this button.

Change device...:

Here you can change the device ID, the comment and/or the device type of a selected device.



New channel...:

If you have a „Button PTM 100“ or „Remote Control“ device, you can define up to 8 channels (A0,A1,B0,B1,C0,C1,D0 and D1).

Each channel can have one of the following functions:

1) "Push => Off (1Bit, EIS10, KNX 1.001), Release => no action"

- By pushing the enocean button the gateway will send an „one bit“ telegram with the value „0“ to the entered group address on the EIB.

2) "Push => On (1Bit, EIS10, KNX 1.001), Release => no action"

- By pushing the enocean button the gateway will send an „one bit“ telegram with the value „1“ to the entered group address on the EIB.



3) "Push => Toggle Off/On (1Bit, EIS10, KNX 1.001), Release => no action"

enocean channel...

Channel: A1

Function: Push => Toggle Off/On (1Bit, EIS10, KNX 1.001), Release => no action

Group address 1: 00/0/001

OK Cancel

- By pushing the enocean button the gateway will send an „one bit“ telegram with the value „0“ or „1“, always toggling between this two values, to the entered group address on the EIB.

4) "Push => On; Release => Off (1Bit, EIS10, KNX 1.001)"

enocean channel...

Channel: A1

Function: Push => On; Release => Off (1Bit, EIS10, KNX 1.001)

Group address 1: 00/0/001

OK Cancel

- By pushing the enocean button the gateway will send an „one bit“ telegram with the value „1“ to the entered group address on the EIB, and if the button gets released the value „0“ will be sent.

5) "Push => Off; Release => On (1Bit, EIS10, KNX 1.001)"

enocean channel...

Channel: A1

Function: Push => Off; Release => On (1Bit, EIS10, KNX 1.001)

Group address 1: 00/0/001

OK Cancel

- By pushing the enocean button the gateway will send an „one bit“ telegram with the value „0“ to the entered group address on the EIB, and if the button gets released the value „1“ will be sent.



6) "Dimming: Push => Up (1..7); Release => Stop (4Bit, EIS20, KNX 3.007)"

enocean channel...

Channel: A1

Function: Dimming: Push => Up (1..7); Release => Stop (4Bit, EIS20, KNX 3.007)

Group address 1: 00/0/001

Value: 5

OK Cancel

- By pushing the enocean button the gateway will send a „four bit dimming up“ telegram with the given value to the entered group address on the EIB. The dimming is controlled by the value in the following way:

1 = 0,5 %, 2 = 1%, 3 = 3%, 4 = 6%, 5 = 12%, 6 = 25%, 7 = 50%.

By releasing the button the gateway will send a „dimming stop“ telegram.

7) "Dimming: Push => Down (1..7); Release => Stop (4Bit, EIS20, KNX 3.007)"

enocean channel...

Channel: A1

Function: Dimming: Push => Down (1..7); Release => Stop (4Bit, EIS20, KNX 3.007)

Group address 1: 00/0/001

Value: 5

OK Cancel

- By pushing the enocean button the gateway will send a „four bit dimming down“ telegram with the given value to the entered group address on the EIB. The dimming is controlled by the value in the following way:

1 = 0,5 %, 2 = 1%, 3 = 3%, 4 = 6%, 5 = 12%, 6 = 25%, 7 = 50%.

By releasing the button the gateway will send a „dimming stop“ telegram.



8) "Dimming: Short => On; Long => Up; Rel. => Stop (1Bit, EIS10, KNX 1.001/4Bit, EIS20, KNX 3.007)"

enocean channel...

Channel: A1

Function: Dimming: Short => On; Long => Up; Rel. => Stop (1Bit, EIS10, KNX 1.001/4Bit, EIS20, KNX 3.007)

Group address 1: 00/0/001

Group address 2: 00/0/002

Value: 5

OK

Cancel

- By doing a short push the gateway will send an „one bit On“ telegram to the first groupaddress.

By doing a long push (> 0.8 seconds) a „four bit dimming up“ telegram will be send to the second groupaddress with the given dimming value:

1 = 0,5 %, 2 = 1%, 3 = 3%, 4 = 6%, 5 = 12%, 6 = 25%, 7 = 50%.

By releasing the button the gateway will send a „dimming stop“ telegram.

9) "Dimming: Short => Off; Long => Dn; Rel. => Stop (1Bit, EIS10, KNX 1.001/4Bit, EIS20, KNX 3.007)"

enocean channel...

Channel: A1

Function: Dimming: Short => Off; Long => Dn; Rel. => Stop (1Bit, EIS10, KNX 1.001/4Bit, EIS20, KNX 3.007)

Group address 1: 00/0/001

Group address 2: 00/0/002

Value: 5

OK

Cancel

- By doing a short push the gateway will send an „one bit Off“ telegram to the first groupaddress.

By doing a long push (> 0.8 seconds) a „four bit dimming down“ telegram will be send to the second groupaddress with the given dimming value:

1 = 0,5 %, 2 = 1%, 3 = 3%, 4 = 6%, 5 = 12%, 6 = 25%, 7 = 50%.

By releasing the button the gateway will send a „dimming stop“ telegram.



10) "Dimming: Push => Up (1..7); Release => no action (4Bit, EIS20, KNX 3.007)"

enocean channel...

Channel: A1

Function: Dimming: Push => Up (1..7); Release => no action (4Bit, EIS20, KNX 3.007)

Group address 1: 00/0/001

Value: 5

OK

Cancel

- By pushing the enocean button the gateway will send a „four bit dimming up“ telegram with the given value to the entered group address on the EIB. The dimming is controlled by the value in the following way:

1 = 0,5 %, 2 = 1%, 3 = 3%, 4 = 6%, 5 = 12%, 6 = 25%, 7 = 50%.

11) "Dimming: Push => Down (1..7); Release => no action (4Bit, EIS20, KNX 3.007)"

enocean channel...

Channel: A1

Function: Dimming: Push => Down (1..7); Release => no action (4Bit, EIS20, KNX 3.007)

Group address 1: 00/0/001

Value: 5

OK

Cancel

- By pushing the enocean button the gateway will send a „four bit dimming down“ telegram with the given value to the entered group address on the EIB. The dimming is controlled by the value in the following way:

1 = 0,5 %, 2 = 1%, 3 = 3%, 4 = 6%, 5 = 12%, 6 = 25%, 7 = 50%.



12) "Dimming: Short => On; Long => Up; Rel. => no action (1Bit, EIS10, KNX 1.001/4Bit, EIS20, KNX 3.007)"

Channel: A1

Function: Dimming: Short => On; Long => Up; Rel. => no action (1Bit, EIS10, KNX 1.001/4Bit, EIS20, KNX 3.007)

Group address 1: 00/0/001

Group address 2: 00/0/002

Value: 5

OK Cancel

- By doing a short push the gateway will send an „one bit On“ telegram to the first groupaddress.

By doing a long push (> 0.8 seconds) a „four bit dimming up“ telegram will be send to the second groupaddress with the given dimming value:

1 = 0,5 %, 2 = 1%, 3 = 3%, 4 = 6%, 5 = 12%, 6 = 25%, 7 = 50%.

13) "Dimming: Short => Off; Long => Down; Rel. => no action (1Bit, EIS10, KNX 1.001/4Bit, EIS20, KNX 3.007)"

Channel: A1

Function: Dimming: Short => Off; Long => Down; Rel. => no action (1Bit, EIS10, KNX 1.001/4Bit, EIS20, KNX 3.007)

Group address 1: 00/0/001

Group address 2: 00/0/002

Value: 5

OK Cancel

- By doing a short push the gateway will send an „one bit Off“ telegram to the first groupaddress.

By doing a long push (> 0.8 seconds) a „four bit dimming down“ telegram will be send to the second groupaddress with the given dimming value:

1 = 0,5 %, 2 = 1%, 3 = 3%, 4 = 6%, 5 = 12%, 6 = 25%, 7 = 50%.



14) "Dimming: Push => Up(9..15)/Down(1..7)/Stop(0/8); Release => no action (4Bit, EIS20, KNX 3.007)"

Channel: A1

Function: Dimming: Push => Up(9..15)/Down(1..7)/Stop(0/8); Release => no action (4Bit, EIS20, KNX 3.007)

Group address 1: 00/0/001

Value: 5

OK Cancel

- By pushing the enocean button the gateway will send a „four bit dimming“ telegram with the given value to the entered group address on the EIB. The dimming is controlled by the value in the following way:

Down: 1 = 0,5 %, 2 = 1%, 3 = 3%, 4 = 6%, 5 = 12%, 6 = 25%, 7 = 50%.

Up: 9 = 0,5 %, 10 = 1%, 11 = 3%, 12 = 6%, 13 = 12%, 14 = 25%, 15 = 50%.

Stop: 0 or 8

15) "Dimming: Push => Brightness (0..255), (8Bit, EIS14000, KNX5.010 not scaled)"

Channel: A1

Function: Dimming: Push => Brightness (0..255), (8Bit, EIS14000, KNX5.010 not scaled)

Group address 1: 00/0/001

Value: 128

OK Cancel

- By pushing the enocean button the gateway will send an „one byte “ telegram with the given brightness value to the entered group address on the EIB.

16) "Jalousie: Push => Up; Release => Stop (1Bit, EIS10, KNX 1.010)"

Channel: A1

Function: Jalousie: Push => Up; Release => Stop (1Bit, EIS10, KNX 1.010)

Group address 1: 00/0/001

Group address 2: 00/0/002

OK Cancel

- By pushing the enocean button the gateway will send an „one bit Up“ telegram to the first group address. By releasing the button the gateway will send a stop telegram to the second groupaddress.



17) "Jalousie: Push => Down; Release => Stop (1Bit, EIS10, KNX 1.010)"

enocean channel...

Channel:

Function:

Group address 1:

Group address 2:

OK Cancel

- By pushing the enocean button the gateway will send an „one bit Down“ telegram to the first group address. By releasing the button the gateway will send a stop telegram to the second groupaddress.

18) "Jalousie: Short => Lam.up; Long => Jal.up; Rel.(long) => Stop (1Bit, EIS10, KNX 1.010)"

enocean channel...

Channel:

Function:

Group address 1:

Group address 2:

OK Cancel

- By doing a short push the gateway will send an „one bit Open“ telegram to the second groupaddress.

By doing a long push (> 0.8 seconds) an „one bit move up “ telegram will be send to the first groupaddress. If a long push gets released, a stop telegram will be send to the second groupaddress.



19) "Jalousie: Short => Lam.dn; Long => Jal.dn; Rel.(long) => Stop (1Bit, EIS10, KNX 1.010)"

The screenshot shows a window titled "enocean channel...". It contains the following fields:

- Channel: A dropdown menu showing "A1".
- Function: A dropdown menu showing "Jalousie: Short => Lam.dn; Long => Jal.dn; Rel.(long) => Stop (1Bit, EIS10, KNX 1.010)".
- Group address 1: A text box containing "00/0/001".
- Group address 2: A text box containing "00/0/002".

On the right side, there are "OK" and "Cancel" buttons.

- By doing a short push the gateway will send an „one bit Close“ telegram to the second groupaddress.

By doing a long push (> 0.8 seconds) an „one bit move down“ telegram will be send to the first groupaddress. If a long push gets released, a stop telegram will be send to the second groupaddress.

20) "Jalousie: Short => Lam.up; Long => Jal.up; Release => no action (1Bit, EIS10, KNX 1.010) "

The screenshot shows a window titled "enocean channel...". It contains the following fields:

- Channel: A dropdown menu showing "A1".
- Function: A dropdown menu showing "Jalousie: Short => Lam.up; Long => Jal.up; Release => no action (1Bit, EIS10, KNX 1.010)".
- Group address 1: A text box containing "00/0/001".
- Group address 2: A text box containing "00/0/002".

On the right side, there are "OK" and "Cancel" buttons.

- By doing a short push the gateway will send an „one bit Open“ telegram to the second groupaddress.

By doing a long push (> 0.8 seconds) an „one bit move up “ telegram will be send to the first groupaddress.



21) "Jalousie: Short => Lam.dn; Long => Jal.dn; Release => no action (1Bit, EIS10, KNX 1.010)"

enocean channel...

Channel: A1

Function: Jalousie: Short => Lam.dn; Long => Jal.dn; Release => no action (1Bit, EIS10, KNX 1.010)

Group address 1: 00/0/001

Group address 2: 00/0/002

OK

Cancel

- By doing a short push the gateway will send an „one bit Close“ telegram to the second groupaddress.

By doing a long push (> 0.8 seconds) an „one bit move down“ telegram will be send to the first groupaddress.

22) "Jalousie Step: Push => Up (1..7); Release => Stop (4Bit, EIS20, KNX 3.008)"

enocean channel...

Channel: A1

Function: Jalousie Step: Push => Up (1..7); Release => Stop (4Bit, EIS20, KNX 3.008)

Group address 1: 00/0/001

Value: 5

OK

Cancel

- By pushing the enocean button the gateway will send a „four bit step up“ telegram with the given value to the entered group address on the EIB. The stepping is controlled by the value in the following way:

1 = 0,5 %, 2 = 1%, 3 = 3%, 4 = 6%, 5 = 12%, 6 = 25%, 7 = 50%.

By releasing the button the gateway will send a „stop“ telegram.



23) "Jalousie Step: Push => Down (1..7); Release => Stop (4Bit, EIS20, KNX 3.008)"

enocean channel...

Channel: A1

Function: Jalousie Step: Push => Down (1..7); Release => Stop (4Bit, EIS20, KNX 3.008)

Group address 1: 00/0/001

Value: 5

OK Cancel

- By pushing the enocean button the gateway will send a „four bit step down“ telegram with the given value to the entered group address on the EIB. The stepping is controlled by the value in the following way:

1 = 0,5 %, 2 = 1%, 3 = 3%, 4 = 6%, 5 = 12%, 6 = 25%, 7 = 50%.

By releasing the button the gateway will send a „stop“ telegram.

24) "Jalousie Step: Push => Up (1..7); Release => no action (4Bit, EIS20, KNX 3.008)"

enocean channel...

Channel: A1

Function: Jalousie Step: Push => Up (1..7); Release => no action (4Bit, EIS20, KNX 3.008)

Group address 1: 00/0/001

Value: 5

OK Cancel

- By pushing the enocean button the gateway will send a „four bit step up“ telegram with the given value to the entered group address on the EIB. The stepping is controlled by the value in the following way:

1 = 0,5 %, 2 = 1%, 3 = 3%, 4 = 6%, 5 = 12%, 6 = 25%, 7 = 50%.



25) "Jalousie Step: Push => Down (1..7); Release => no action (4Bit, EIS20, KNX 3.008)"

Channel: A1

Function: Jalousie Step: Push => Down (1..7); Release => no action (4Bit, EIS20, KNX 3.008)

Group address 1: 00/0/001

Value: 5

OK Cancel

- By pushing the enocean button the gateway will send a „four bit step down“ telegram with the given value to the entered group address on the EIB. The stepping is controlled by the value in the following way:

1 = 0,5 %, 2 = 1%, 3 = 3%, 4 = 6%, 5 = 12%, 6 = 25%, 7 = 50%.

26) "Jalousie Step: Push => Up(9..15)/Down(1..7)/Stop(0/8); Release => no action (4Bit, EIS20, KNX 3.008)"

Channel: A1

Function: Jalousie Step: Push => Up(9..15)/Down(1..7)/Stop(0/8); Release => no action (4Bit, EIS20, KNX 3.008)

Group address 1: 00/0/001

Value: 5

OK Cancel

- By pushing the enocean button the gateway will send a „four bit step“ telegram with the given value to the entered group address on the EIB. The stepping is controlled by the value in the following way:

Down: 1 = 0,5 %, 2 = 1%, 3 = 3%, 4 = 6%, 5 = 12%, 6 = 25%, 7 = 50%.

Up: 9 = 0,5 %, 10 = 1%, 11 = 3%, 12 = 6%, 13 = 12%, 14 = 25%, 15 = 50%.

Stop: 0 or 8



27) "Jalousie Step: Push => Position (0..255), (8Bit, EIS14000, KNX5.010 no scaled)"

enocean channel...

Channel: A1

Function: Jalousie Step: Push => Position (0..255), (8Bit, EIS14000, KNX5.010 no scaled)

Group address 1: 00/0/001

Value: 128

OK Cancel

- By pushing the enocean button the gateway will send an „one byte “ telegram with the given position value to the entered group address on the EIB.

28) "Analog: Push => 1 byte value (0..255), (8Bit without sign, EIS14, KNX 5.010)"

enocean channel...

Channel: A1

Function: Analog: Push => 1 byte value (0..255), (8Bit without sign, EIS14, KNX 5.010)

Group address 1: 00/0/001

Value: 128

OK Cancel

- By pushing the enocean button the gateway will send an „one byte “ telegram with the given value to the entered group address on the EIB.

29) "Analog: Push => 2 byte value (0..65535), (16Bit without sign, EIS10000, KNX 7.001)"

enocean channel...

Channel: A1

Function: Analog: Push => 2 byte value (0..65535), (16Bit without sign, EIS10000, KNX 7.001)

Group address 1: 00/0/001

Value: 33000

☒ Integer ☐ Floating point

OK Cancel

- By pushing the enocean button the gateway will send a „two byte “ telegram with the given value to the entered group address on the EIB. The value has to be an integer (16 bit value).



30) "Analog: Push => 2 byte value floating point, (with sign, EIS50xx, KNX 9.0xx)"

Channel: A1

Function: Analog: Push => 2 byte value floating point, (with sign, EIS50xx, KNX 9.0xx)

Group address 1: 00/0/001

Value: 2,5 ☐ Integer ☒ Floating point

OK Cancel

- By pushing the enocean button the gateway will send a „two byte “ telegram with the given value to the entered group address on the EIB. The value has to be a floating point number (EIS 5 data type).

31) "Analog: Push => 4 byte value (32Bit without sign, EIS11000, KNX 12.001)"

Channel: A1

Function: Analog: Push => 4 byte value

Group address 1: 00/3/003

Value: 12344.368 ☐ Integer ☒ Floating point

OK Cancel

- By pushing the enocean button the gateway will send a „four byte “ telegram with the given value to the entered group address on the EIB. The value has to be an integer (32 bit value).

32) "Analog: Push => 4 byte value floating point, (with sign, EIS90xx, KNX 14.xxx)"

Channel: A1

Function: Analog: Push => 4 byte value floating point, (with sign, EIS90xx, KNX 14.xxx)

Group address 1: 00/0/001

Value: 100,5 ☐ Integer ☒ Floating point

OK Cancel

- By pushing the enocean button the gateway will send a „four byte “ telegram with the given value to the entered group address on the EIB. The value has to be a floating point number (IEEE data type).



33) "Text: Push => Text (1..14 characters), (KNX 16.00x)"

enocean channel...

Channel: A1

Function: Text: Push => Text (1..14 characters), (KNX 16.00x)

Group address 1: 00/0/001

Value: TEST

OK Cancel

- By pushing the enocean button the gateway will send the given text as a telegram to the entered group address on the EIB. The telegram length is dependant on the text length!

34) "Text: Push => Text (10 characters), (filled with spaces up to 10 chars, KNX 16.00x)"

enocean channel...

Channel: A1

Function: Text: Push => Text (10 characters), (filled with spaces up to 10 chars, KNX 16.00x)

Group address 1: 00/0/001

Value: TEST

OK Cancel

- By pushing the enocean button the gateway will send the given text as a "10 byte" telegram to the entered group address on the EIB. If the given text is smaller than ten bytes, it will be filled with space characters.

35) "Text: Push => Text (14 characters), (filled with spaces up to 14 chars,EIS15000, KNX 16.00x)"

enocean channel...

Channel: A1

Function: Text: Push => Text (14 characters), (filled with spaces up to 14 chars,EIS15000, KNX 16.00x)

Group address 1: 00/0/001

Value: TEST

OK Cancel

- By pushing the enocean button the gateway will send the given text as a "14 byte" telegram to the entered group address on the EIB. If the given text is smaller than fourteen bytes, it will be filled with space characters.



36) "Push => Lock (1Bit, EIS10, KNX 1.003), Release => no action"

enocean channel...

Channel: A1

Function: Push => Lock (1Bit, EIS10, KNX 1.003), Release => no action

Group address 1: 00/0/001

OK Cancel

- By pushing the enocean button the gateway will send an „one bit lock“ telegram with the value „0“ to the entered group address on the EIB.

37) "Push => Unlock (1Bit, EIS10, KNX 1.003), Release => no action"

enocean channel...

Channel: A1

Function: Push => Unlock (1Bit, EIS10, KNX 1.003), Release => no action

Group address 1: 00/0/001

OK Cancel

- By pushing the enocean button the gateway will send an „one bit unlock“ telegram with the value „1“ to the entered group address on the EIB.

38) "Push => Toggle unlock/lock (1Bit, EIS10, KNX 1.003), Release => no action"

enocean channel...

Channel: A1

Function: Push => Toggle unlock/lock (1Bit, EIS10, KNX 1.003), Release => no action

Group address 1: 00/0/001

OK Cancel

- By pushing the enocean button the gateway will send an „one bit“ telegram with the value „lock“ or „unlock“, always toggling between this two values, to the entered group address on the EIB.



39) "Push => Unlock; Release => Lock (1Bit, EIS10, KNX 1.003)"

enocean channel...

Channel: A1

Function: Push => Unlock; Release => Lock (1Bit, EIS10, KNX 1.003)

Group address 1: 00/0/001

OK Cancel

- By pushing the enocean button the gateway will send an „one bit“ telegram with the value „unlock“ to the entered group address on the EIB, and if the button gets released the value “lock” will be sent.

40) "Push => Lock; Release => Unlock (1Bit, EIS10, KNX 1.003)"

enocean channel...

Channel: A1

Function: Push => Lock; Release => Unlock (1Bit, EIS10, KNX 1.003)

Group address 1: 00/0/001

OK Cancel

- By pushing the enocean button the gateway will send an „one bit“ telegram with the value „lock“ to the entered group address on the EIB, and if the button gets released the value “unlock” will be sent.

41) "Push => Up (1Bit, EIS10, KNX 1.008), Release => no action"

enocean channel...

Channel: A1

Function: Push => Up (1Bit, EIS10, KNX 1.008), Release => no action

Group address 1: 00/0/001

OK Cancel

- By pushing the enocean button the gateway will send an „one bit up“ telegram with the value „0“ to the entered group address on the EIB.



42) "Push => Down (1Bit, EIS10, KNX 1.008), Release => no action"

enocean channel...

Channel: A1

Function: Push => Down (1Bit, EIS10, KNX 1.008), Release => no action

Group address 1: 00/0/001

OK Cancel

- By pushing the enocean button the gateway will send an „one bit down“ telegram with the value „1“ to the entered group address on the EIB.

43) "Push => Toggle up/down (1Bit, EIS10, KNX 1.008), Release => no action"

enocean channel...

Channel: A1

Function: Push => Toggle up/down (1Bit, EIS10, KNX 1.008), Release => no action

Group address 1: 00/0/001

OK Cancel

- By pushing the enocean button the gateway will send an „one bit“ telegram with the value „up“ or „down“, always toggling between this two values, to the entered group address on the EIB.

44) "Push => Down; Release => Up (1Bit, EIS10, KNX 1.008)"

enocean channel...

Channel: A1

Function: Push => Down; Release => Up (1Bit, EIS10, KNX 1.008)

Group address 1: 00/0/001

OK Cancel

- By pushing the enocean button the gateway will send an „one bit“ telegram with the value „down“ to the entered group address on the EIB, and if the button gets released the value „up“ will be sent.



45) "Push => Up; Release => Down (1Bit, EIS10, KNX 1.008)"

enocean channel...

Channel:

Function:

Group address 1:

OK Cancel

- By pushing the enocean button the gateway will send an „one bit“ telegram with the value „up“ to the entered group address on the EIB, and if the button gets released the value “down” will be sent.

46) "Push => Start (1Bit, EIS10, KNX 1.010), Release => no action"

enocean channel...

Channel:

Function:

Group address 1:

OK Cancel

- By pushing the enocean button the gateway will send an „one bit start“ telegram with the value „1“ to the entered group address on the EIB.

47) "Push => Stop (1Bit, EIS10, KNX 1.010), Release => no action"

enocean channel...

Channel:

Function:

Group address 1:

OK Cancel

- By pushing the enocean button the gateway will send an „one bit stop“ telegram with the value „0“ to the entered group address on the EIB.



48) "Push => Toggle Start/Stop (1Bit, EIS10, KNX 1.010), Release => no action"

enocean channel...

Channel: A1

Function: Push => Toggle Start/Stop (1Bit, EIS10, KNX 1.010), Release => no action

Group address 1: 00/0/001

OK Cancel

- By pushing the enocean button the gateway will send an „one bit“ telegram with the value „start“ or „stop“, always toggling between this two values, to the entered group address on the EIB.

49) "Push => Start; Release => Stop (1Bit, EIS10, KNX 1.010)"

enocean channel...

Channel: A1

Function: Push => Start; Release => Stop (1Bit, EIS10, KNX 1.010)

Group address 1: 00/0/001

OK Cancel

- By pushing the enocean button the gateway will send an „one bit“ telegram with the value „start“ to the entered group address on the EIB, and if the button gets released the value „stop“ will be sent.

50) "Push => Stop; Release => Start (1Bit, EIS10, KNX 1.010)"

enocean channel...

Channel: A1

Function: Push => Stop; Release => Start (1Bit, EIS10, KNX 1.010)

Group address 1: 00/0/001

OK Cancel

- By pushing the enocean button the gateway will send an „one bit“ telegram with the value „stop“ to the entered group address on the EIB, and if the button gets released the value „start“ will be sent.



The „STM1 Sensor 1 Byte“ enocean device has following functions:

1) "Transparent: 0..255 => 0..255, (8Bit, EIS14000, KNX5.010 not scaled)"

enocean channel...

Function: Transparent: 0..255 => 0..255, (8Bit, EIS14000, KNX5.010 not scaled)

Group address: 00/0/001

OK Cancel

- The received value will be send as „one byte“ telegram to the entered group address.

2) "Digital: xxxxxxx0=>0; xxxxxxx1=>1 (8Bit => 1 Bit), (1Bit, EIS10, KNX1.010)"

enocean channel...

Function: Digital: xxxxxxx0=>0; xxxxxxx1=>1 (8Bit => 1 Bit), (1Bit, EIS10, KNX1.010)

Group address: 00/0/001

OK Cancel

- The lowest bit of the received value will be send as „one bit“ telegram to the entered group address.

Note: window contacts of type STM250 are sending the information „window closed“ in this format.

3) "Digital: xxxxxxx0=>1; xxxxxxx1=>0 (8Bit => 1 Bit), (1Bit, EIS10, KNX1.010)"

enocean channel...

Function: Digital: xxxxxxx0=>1; xxxxxxx1=>0 (8Bit => 1 Bit), (1Bit, EIS10, KNX1.010)

Group address: 00/0/001

OK Cancel

- The inverted lowest bit of the received value will be send as „one bit“ telegram to the entered group address.

Note: window contacts of type STM250 are sending the information „window opened“ in this format.

4) "Digital: 0..127 => 0; 128..255 => 1 (8Bit => 1 Bit), (1Bit, EIS10, KNX1.010)"

enocean channel...

Function: Digital: 0..127 => 0; 128..255 => 1 (8Bit => 1 Bit), (1Bit, EIS10, KNX1.010)

Group address: 00/0/001

OK Cancel

- If the received value is smaller than 128, an „one bit Off“ telegram will be send to



the given groupaddress. Is he value greater or equal 128, an „one bit On“ telegram will be send to the given groupaddress

5) "Digital: 0..127 => 1; 128..255 => 0 (8Bit => 1 Bit), (1Bit, EIS10, KNX1.010)"

Function: Digital: 0..127 => 1; 128..255 => 0 (8Bit => 1 Bit), (1Bit, EIS10, KNX1.010)

Group address: 00/0/001

OK Cancel

- If the received value is smaller than 128, an „one bit On“ telegram will be send to the given groupaddress. Is he value greater or equal 128, an „one bit Off“ telegram will be send to the given groupaddress

6) "Digital: 0..31 => 0; 32..63 => 1 (8Bit => 1 Bit), (1Bit, EIS10, KNX1.010)"

Function: Digital: 0..31 => 0; 32..63 => 1 (8Bit => 1 Bit), (1Bit, EIS10, KNX1.010)

Group address: 00/0/001

OK Cancel

- If the received value is in the range 0..31, an „one bit Off“ telegram will be send to the given groupaddress.

If the received value is in the range 32..63, an „one bit On“ telegram will be send to the given groupaddress.

7) "Digital: 64..95 => 0; 96..127 => 1 (8Bit => 1 Bit), (1Bit, EIS10, KNX1.010)"

Function: Digital: 64..95 => 0; 96..127 => 1 (8Bit => 1 Bit), (1Bit, EIS10, KNX1.010)

Group address: 00/0/001

OK Cancel

- If the received value is in the range 64..95, an „one bit Off“ telegram will be send to the given groupaddress.

If the received value is in the range 96..127, an „one bit On“ telegram will be send to the given groupaddress.

8) "Digital: 128..159 => 0; 160..191 => 1 (8Bit => 1 Bit), (1Bit, EIS10, KNX1.010)"

Function: Digital: 128..159 => 0; 160..191 => 1 (8Bit => 1 Bit), (1Bit, EIS10, KNX1.010)

Group address: 00/0/001

OK Cancel



- If the received value is in the range 128..159, an „one bit Off“ telegram will be send to the given groupaddress.

If the received value is in the range 160..191, an „one bit On“ telegram will be send to the given groupaddress.

9) "Digital: 192..223 => 0; 224..255 => 1 (8Bit => 1 Bit), (1Bit, EIS10, KNX1.010)"

enocean channel...

Function: Digital: 192..223 => 0; 224..255 => 1 (8Bit => 1 Bit), (1Bit, EIS10, KNX1.010)

Group address: 00/0/001

OK Cancel

- If the received value is in the range 192..223, an „one bit Off“ telegram will be send to the given groupaddress.

If the received value is in the range 224..255, an „one bit On“ telegram will be send to the given groupaddress.

Note: the functions 6 – 9 are used for various motion sensors.

10) "Analog: 0..255 => 40°..0°, (signed, EIS5001, KNX 9.001)"

enocean channel...

Function: Analog: 0..255 => 40°..0°, (signed, EIS5001, KNX 9.001)

Group address: 00/0/001

OK Cancel

- The received value will be converted to an EIS5 floating point value, and send as a “two byte float” telegram to the given groupaddress.

Value 0 = 40.0 °Celsius, value 255 = 0.0 °Celsius.

11) "Analog: 0..250 => 0°..40°, (signed, EIS5001, KNX 9.001)"

- The received value will be converted to an EIS5 floating point value, and send as a “two byte float” telegram to the given groupaddress.

Value 0 = 0.0 °Celsius, value 250 = 40.0 °Celsius.

12) "Analog: 0..255 => 60°..-20°, (signed, EIS5001, KNX 9.001)"

- The received value will be converted to an EIS5 floating point value, and send as a “two byte float” telegram to the given groupaddress.

Value 0 = 60.0 °Celsius, value 255 = -20.0 °Celsius.



13) "Analog: 0..255 => 90°..10°, (signed, EIS5001, KNX 9.001)"

- The received value will be converted to an EIS5 floating point value, and send as a "two byte float" telegram to the given groupaddress.

Value 0 = 90.0 °Celsius, value 255 = 10.0 °Celsius.

14) "Analog: 0..255 => 3 lux..300 lux, (signed, EIS5004, KNX 9.004)"

- The received value will be converted to an EIS5 floating point value, and send as a "two byte float" telegram to the given groupaddress.

Value 0 = 3.0 lux, value 255 = 300.0 lux.

15) "Analog: 0..255 => 30 lux..3000 lux, (signed, EIS5004, KNX 9.004)"

- The received value will be converted to an EIS5 floating point value, and send as a "two byte float" telegram to the given groupaddress.

Value 0 = 30.0 lux, value 255 = 3000.0 lux.

16) "Analog: 0..255 => 300 lux..30000 lux, (signed, EIS5004, KNX 9.004)"

- The received value will be converted to an EIS5 floating point value, and send as a "two byte float" telegram to the given groupaddress.

Value 0 = 300.0 lux, value 255 = 30000.0 lux.

17) "Analog: 0..255 => 600 lux..60000 lux, (signed, EIS5004, KNX 9.004)"

- The received value will be converted to an EIS5 floating point value, and send as a "two byte float" telegram to the given groupaddress.

Value 0 = 600.0 lux, value 255 = 60000.0 lux.



18) "Analog: 0..255 => 0 lux..100000 lux, (signed, EIS5004, KNX 9.004)"

- The received value will be converted to an EIS5 floating point value, and send as a "two byte float" telegram to the given groupaddress.

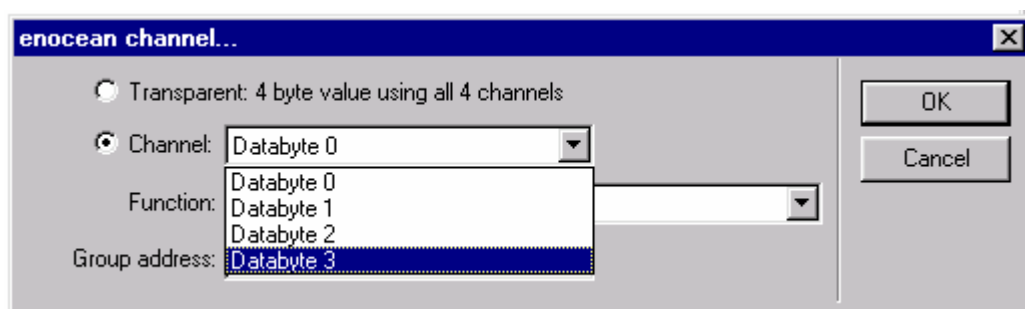
Value 0 = 0.0 lux, value 255 = 100000.0 lux.

19) "Analog: 0..250 => 0%..100 %, (signed, EIS6001-2, KNX 5.001)"

- The received value will be converted to an EIS5 floating point value, and send as a "two byte float" telegram to the given groupaddress.

Value 0 = 0 % (relative humidity), value 250 = 100.0 % (relative humidity).

The „STM4 Sensor 4 Byte“ enocean device has the same functions as the 1 byte sensors, but it contains up to 4 channels:



„Databyte 0“ .. „Databyte 3“.

You can see in the sensor documentation how the channels are used in your sensor.

There is also an alternative "transparent" option with the gateway, to send the received values (4 channels, each 1 byte) as a "four byte" telegram to the given groupaddress.



Gateway usage:

Below the list the current usage of the gateway will be displayed in % :

Gateway-Usage:	Devices: 2 %	Channels: 1 %
----------------	--------------	---------------

Every device will take 2% of the gateway's device memory (therefore up to 50 devices can be handled with one gateway).

The channel memory usage depends on the channel function (estimated values):

Sensor channel : 0.4 %

Switch modul functions

1, 2, 4 : 0.4%

3, 5, 6, 13 : 0.5%

9, 10, 11, 12, 14 : 0.6%

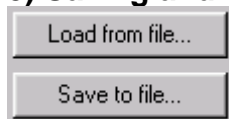
7, 8 : 0.7%

15 : 0.8%

16, 17, 18 : 0.5% .. 1.8%, depends on the text length



3) Saving and downloading the configuration



By using the „Save to file“ button all definitions will be saved into an „.EGT“ file. Also, saving the definitions will create a „.TEL“ file. Such TEL files can be used with the ETS2 or ETS3 to transfer the definitions into the gateway.

But of course it is easier to push the „Transfer to GW“ button (available if EIBWeiche is connected to the PC, and the EIBDoktor logging is started): all definitions will be immediately transferred to the gateway.