

# KNX IP Interface 730

Operating and installation manual

EN



## Application

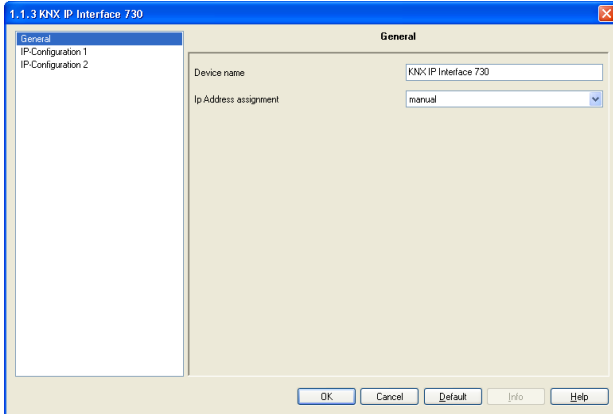
The KNX IP Interface 730 can be used as an interface for accessing the KNX/EIB via IP, replacing an RS232 or USB interface.

It has an external 12 V to 24 V power supply or can alternatively be powered via Power-over-Ethernet (IEEE 802.3af).

## ETS database

The following parameters can be set on the ETS:

### General:



### Device name:

The KNX IP Interface can be assigned a name of your choice. The device name should be descriptive (e.g. Line TF). It is used to search for and recognize a device.

### IP address assignment:

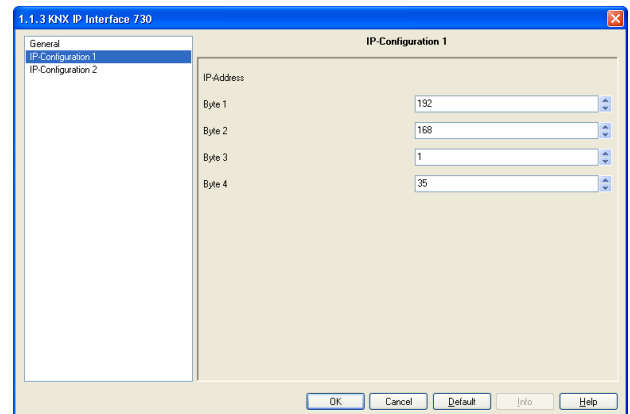
#### Automatic (DHCP):

The IP address is automatically assigned on the DHCP, i.e. additional settings are not required. To be able to use this function, there must be a DHCP server in the LAN (many DSL routers have an integrated DHCP server).

#### Manual:

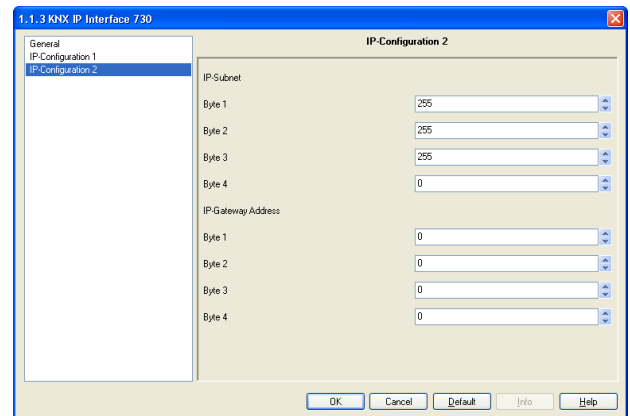
In this case, the IP address, the subnet and the gateway IP address must be entered manually.

### IP configuration:



### IP address:

This is the IP address of the KNX IP Interface 730.



### IP subnet:

Enter the subnet mask here. The device uses the values entered in this mask to determine whether there is a communications partner in the local network. If there is no partner in the local network, the device will not send the telegrams directly to the partner but to the gateway that routes the telegram.

### IP gateway address:

Enter the IP address of the gateway here.

Note: If the KNX IP Interface will only be used in the local LAN, the entry of 0.0.0.0 can remain unchanged.

Example of assigning IP addresses:

A PC is to be used to access the KNX IP Interface 730.

IP address of the PC: 192.168.1.30

Subnet of the PC: 255.255.255.0

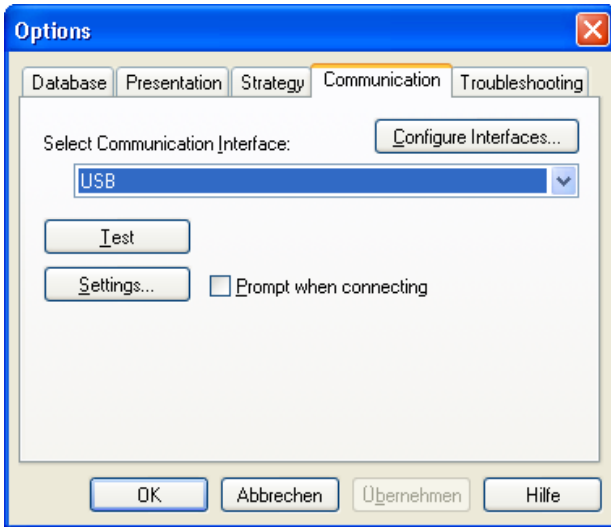
The KNX IP Interface 730 is located in the same local LAN, i.e. it uses the same subnet. The subnet constrains the IP addresses that can be assigned. In this example, the IP address of the IP interface must be 192.168.1.xx, where xx can be a number from 1 to 254 (with the exception of 30, which is already in use). It must be ensured that no numbers are assigned twice.

IP address of the IP interface: 192.168.1.31

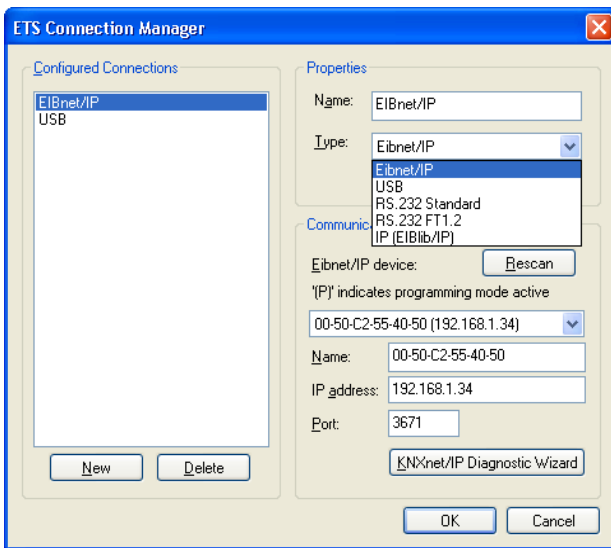
Subnet of the IP interface: 255.255.255.0

**ETS Connection Manager**

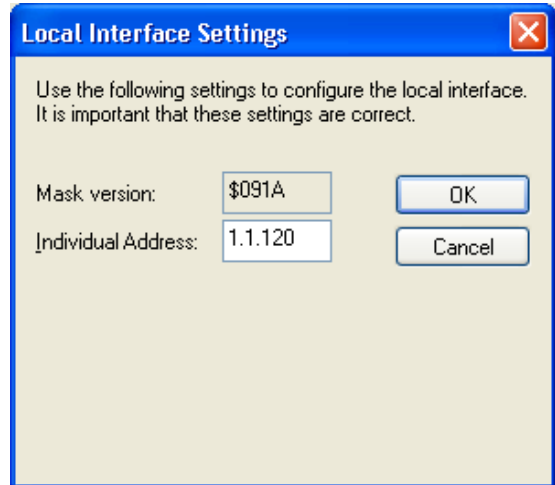
If the IP configuration of the KNX IP Interface 730 is valid, the interface can be used as an interface to KNX/EIB. To use this function, select the Communication tab under Extras -> Options in the ETS (version 3.0c and higher):



Click *Configure interfaces...* to open the ETS Connection Manager. Create a new connection by selecting EIBnet/IP under Type. The ETS automatically begins searching for all KNXnet/IP devices. All devices found are displayed. Select the required device.



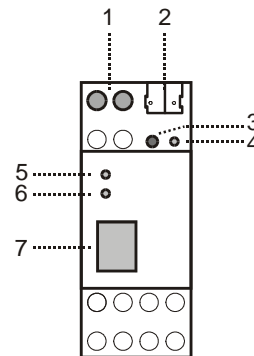
To be able to access KNX/EIB, the KNX IP Interface 730 requires an additional physical address. This second physical address is only used for bus access and must be set up separately: Select the Communication tab under Extras -> Options in the ETS. The communications interface is the connection that is currently configured. Click on *Settings...* to open the following window:



Enter a physical address of your choice. A dummy device may have to be added to the ETS project to reserve this address.

**Installation and connection**

The KNX IP Interface 730 is designed for installation in a rack with a depth of 2 units. It contains the following display and control elements:



- 1: Connector for external power supply (12 V to 24 V AC/DC)
- 2: Connector for KNX/EIB with a bus terminal
- 3: Learn key
- 4: Learn LED (red)
- 5: LED (green):
  - Lights up to indicate bus voltage on KNX/EIB
  - Flashes to indicate telegram traffic
- 6: LED (green):
  - Lights up to indicate an Ethernet connection
  - Flashes to indicate telegram traffic
- 7: RJ 45 socket for connecting an Ethernet patch cable

An external power supply only needs to be connected if the switch in use does not support Power-over-Ethernet.



Weinzierl Engineering GmbH  
 84558 Tyrlaching  
 E-Mail: info@weinzierl.de  
 Web: www.weinzierl.de